

Did you know?
<http://shop.hallauer-group.de>

LHG supports you in the field of:

Solid sliding bearings

- bronze bearings with and without graphite
- steel and steel/manganese bearings
- maintenance-free steel bearings
- sintered bronze bearings with dry-graphite
- high temperature bearings up to 650 °C

Plastic sliding bearings

- injection molding plastics
- extrusion plastics
- Fibre-reinforced composite bearings

Spherical plain bearings and rod ends

- common standard sizes
- customized special solutions

Sliding pads and sliding support bearings

- free, guided and fixed versions
- temperature-isolated versions

In case you can't find the right product, we will develop a customized solution according to your conditions.



All our products can be ordered...

- ✓ **faster**
- ✓ **easier**
- ✓ **directly**

... from our stock.

Keep it a try!



GLT Bearings
Stahlgruberring 26
81829 München

45
years
of expertise in sliding
bearing technology

- ✓ **Sliding bearings**
- ✓ **Spherical plain bearings**
- ✓ **Rod ends**
- ✓ **Sliding support bearing**



GLT are your experts for:

wrapped maintenance-free sliding bushings

- Metal-polymer sliding bushings
- Bronze sliding bushings with graphite
- Bi-metal sliding bushings with graphite

wrapped maintenance-bound sliding bushings

- POM-coated sliding bushings
- Bronze sliding bushings
- Bi-metal sliding bushings

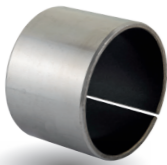
Sintered sliding bushings

- Sintered bronze sliding bushings
- Sintered iron sliding bushings
- Sintered components

Our service includes:

- consultation for the the right product choice
- customized storage solutions
- support for your material handling (Kanban, customized packaging etc.)





TEF - MET® wrapped sliding bearing ● ● ● ●

Material	Steel/PTFE
Static load	< 250 N/mm²
Dynamic load	< 140 N/mm²
Sliding speed	< 2,5 m/s
Friction coefficient	0,03 - 0,25 μ
Temperature	-200 till +280°C



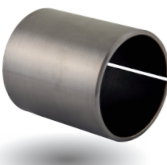
TEF - MET®/P Wrapped sliding bearings ● ● ● ●

Material	Steel/Special-PTFE
Static load	< 250 N/mm²
Dynamic load	< 140 N/mm²
Sliding speed	< 2,0 m/s
Friction coefficient	0,03 - 0,20 μ
Temperature	-195 till +280°C



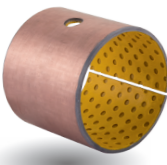
TEF - MET®/B Wrapped sliding bearings ● ● ● ●

Material	Bronze/PTFE
Static load	< 200 N/mm²
Dynamic load	< 140 N/mm²
Sliding speed	< 2,5 m/s
Friction coefficient	0,02 - 0,25 μ
Temperature	-200 till +280°C



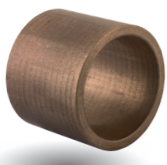
NOX - MET® Wrapped sliding bearings ● ● ● ●

Material	Stainless steel/PTFE
Static load	< 250 N/mm²
Dynamic load	< 140 N/mm²
Sliding speed	< 2,0 m/s
Friction coefficient	0,02 - 0,20 μ
Temperature	-200 till +280°C



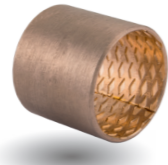
POM - MET® Wrapped sliding bearings ● ● ● ●

Material	Steel/POM
Static load	< 250 N/mm²
Dynamic load	< 140 N/mm²
Sliding speed	< 2,5 m/s
Friction coefficient	0,03 - 0,12 μ
Temperature	-40 till +130°C



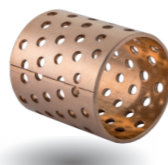
SIB - MET® Sintered sliding bearings ● ● ● ●

Material	Bronze (if needed Sinter-iron)
Static load	< 50 N/mm²
Dynamic load	< 5 N/mm²
Sliding speed	< 6 m/s
Friction coefficient	0,05 - 0,20 μ
Temperature	-20 till +100°C



BRO - MET® Wrapped bronze sliding bearings ● ● ● ●

Material	Bronze/Special bronze
Static load	< 120 N/mm²
Dynamic load	< 40 N/mm²
Sliding speed	< 2,5 m/s
Friction coefficient	0,05 - 0,12 μ
Temperature	-40 till +250°C



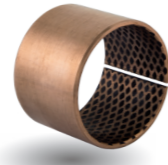
BRO - MET®/L Wrapped sliding bearings ● ● ● ●

Material	Bronze/Special bronze
Static load	< 120 N/mm²
Dynamic load	< 40 N/mm²
Sliding speed	< 2,5 m/s
Friction coefficient	0,05 - 0,20 μ
Temperature	-40 till +250°C



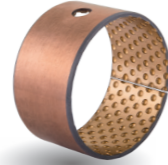
BRO - MET®/LD Wrapped sliding bearings ● ● ● ●

Material	Bronze with seal
Static load	< 120 N/mm²
Dynamic load	< 40 N/mm²
Sliding speed	< 2,5 m/s
Friction coefficient	0,05 - 0,20 μ
Temperature	-40 till +150°C



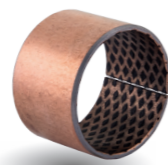
BRO-LUB® Wrapped bronze sliding bearings ● ● ● ●

Material	Bronze/Graphit
Static load	< 120 N/mm²
Dynamic load	< 40 N/mm²
Sliding speed	< 2,5 m/s
Friction coefficient	0,03 - 0,25 μ
Temperature	-100 till +200°C



BIV - MET® Wrapped bi-metal sliding bearings ● ● ● ●

Material	Steel/Bronze
Static load	< 250 N/mm²
Dynamic load	< 140 N/mm²
Sliding speed	< 2,5 m/s
Friction coefficient	0,04 - 0,12 μ
Temperature	-40 till +250°C



BIV - LUB® Wrapped sliding bearings ● ● ● ●

Material	Steel/Bronze/Graphit
Static load	< 200 N/mm²
Dynamic load	< 75 N/mm²
Sliding speed	< 0,4 m/s
Friction coefficient	0,08 - 0,22 μ
Temperature	-100 till +200°C



LUB - MET® Solid bronze sliding bearings ● ● ● ●

Material	Bronze/Graphit or PTFE
Static load	< 150 N/mm²
Dynamic load	< 100 N/mm²
Sliding speed	< 1,0 m/s
Friction coefficient	0,03 - 0,20 μ
Temperature	-100 till +300°C



BRO - MAS® Solid bronze sliding bearings ● ● ● ●

Material	Bronze (also special alloys)
Static load	< 150 N/mm²
Dynamic load	< 60 N/mm²
Sliding speed	< 10,0 m/s
Friction coefficient	0,09 - 0,15 μ
Temperature	-40 till +150°C



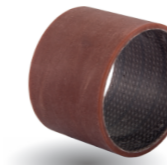
COM - KU®/D Composite sliding bearings ● ● ● ●

Material	high-tec composite bearing
Compression strength	< 330 N/mm²
Dynamic load	< 130 N/mm²
Sliding speed	< 2 m/s
Friction coefficient	0,04 - 0,13 μ
Temperature	-200 till +200°C



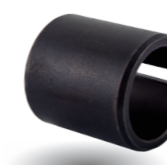
COM - KU®/X Solid plastic sliding bearings ● ● ● ●

Material	Plastic (also for food industry)
Static load	< 75 N/mm²
Dynamic load	< 25 N/mm²
Sliding speed	< 1,7 m/s
Friction coefficient	0,08 - 0,18 μ
Temperature	-150 till +70°C



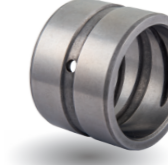
COM - KU®/M Composite sliding bearing ● ● ● ●

Material	high-tec composite bearing
Static load	< 240 N/mm²
Dynamic load	< 140 N/mm²
Sliding speed	< 0,4 m/s
Friction coefficient	0,03 - 0,12 μ
Temperature	-190 till +160°C



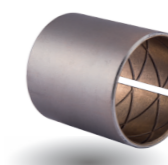
FER - MET® Tension bushing ● ● ● ●

Material	Spring steel
Static load	< 350 N/mm²
Dynamic load	< 200 N/mm²
Sliding speed	< 1 m/s
Friction coefficient	0,5 - 0,6 μ
Temperature	-200 till +350°C



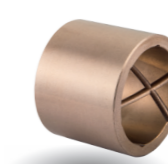
FER - MAS® Solid steel bearing ● ● ● ●

Material	Steel
Static load	< 250 N/mm²
Dynamic load	< 150 N/mm²
Sliding speed	< 0,6 m/s
Friction coefficient	0,05 - 0,25 μ
Temperature	-100 till +250°C



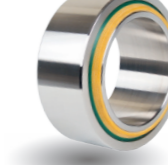
GAP - MET®/S Wrapped sliding bearings ● ● ● ●

Material	Bronze/Graphit - Steel/Bronze/stainless steel
Static load	< 260 N/mm²
Dynamic load	< 80 N/mm²
Sliding speed	< 0,5 m/s
Friction coefficient	0,10 till 0,20 μ
Temperature	-150 - +280°C



GAP - MET®/M Solid sintered bronze bearing ● ● ● ●

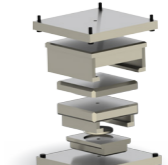
Material	Bronze/Graphit
Static load	< 250 N/mm²
Dynamic load	< 130 N/mm²
Sliding speed	< 0,5 m/s
Friction coefficient	0,10 - 0,20 μ
Temperature	-150 till +650°C



Spherical plain bearings
Maintenance-free and maintenance-bound spherical plain bearings produced according to ISO-12240, made from bearing-steel or stainless steel. Customized solutions for special applications or heavy loads made from COM-KU®/D, LUB-MET® or GAP-MET®/M are also available.



Rod ends
Our rod ends are produced according to ISO-standard and in different versions available. We can deliver maintenance-free or maintenance-bound, with or without seals, for screwing, welding or clamp, for hydraulic or every other machine or industrial engineering areas.



Sliding support bearing/Pipe bearings / POD bearings
We can deliver different version of our sliding plates and sliding support bearings directly from our stock. Additional to this service we can develop customized solutions, equal if the design is flat or a calotte, with limited movement, or used in areas with high temperatures up to 500°C.